

# BROOKLYN 55 HOPE -VINTAGE WILLIAMSBURG- NEW YORK

## FLOORPLAN - 1 BEDROOM & HOME OFFICE



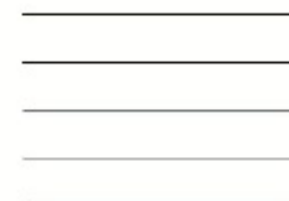
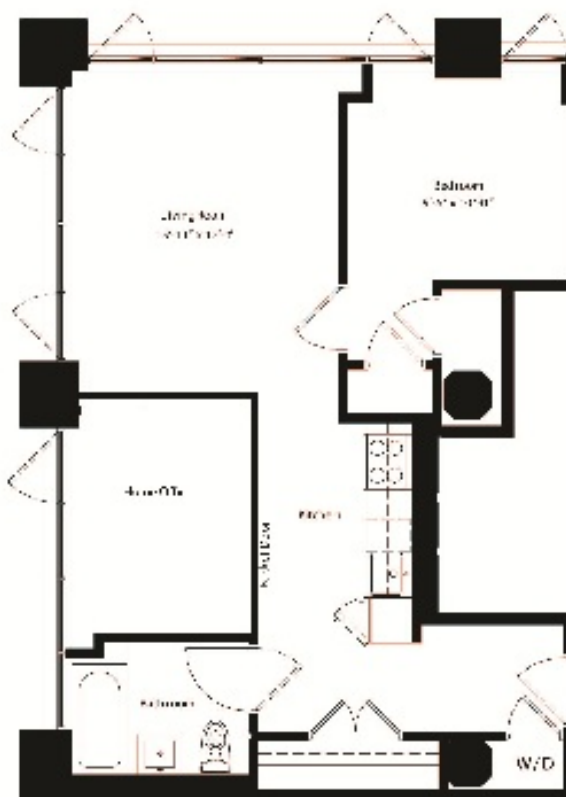
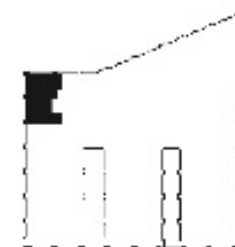
2ND TO  
5TH FLOOR

BROOKLYN  
55  
**HOPE**

— VINTAGE WILLIAMSBURG —

NEW YORK

LOFT 212 TO 512 / 758 SF



- Wide plank oak floors
- White glass counter tops
- Imported Italian chef's-kitchens
- Stainless steel appliances
- 10 ft exposed concrete ceilings
- 8 foot solid core doors
- Spa inspired bathrooms
- Kohler fixtures & Toto toilets
- Washer / Dryers



All information furnished herein is from sources deemed reliable. No representation is made nor is any to be implied as to the accuracy thereof and all information is submitted subject to errors, omissions, change of price, prior lease, or withdrawal without notice. All dimensions are approximate. For exact dimensions, please hire your own architect or engineer.